

NETHERWOOD POINTE

SOLD!



Another fine community developed, built, and sold by TJC Communities!

To see more of our communities
visit us at www.tjcHomes.com



**920 South Avenue
Plainfield, NJ 07060**



Construction Features

- Individually controlled central air conditioning & heating systems
- Sewer and Water usage included
- Gourmet Kitchen includes refrigerator with water and ice dispenser
- Granite kitchen counter tops
- Washer & Dryer
- Spacious Living Room, Dining Room, and Bedrooms
- Townhome or Flat unit types with up to 2.5 bathrooms
- Private Covered Parking
- Private Patio or Balcony
- Private Entry into all units
- Private In-Unit Storage Area
- Plush wall to wall carpet
- Designer Bathrooms with extra large Master Bathroom shower
- Ceramic tile flooring in kitchen and bathrooms
- Charming Victorian architecture
- 1-minute to Netherwood Train Station

★ NETHERWOOD
★ POINTE ★

Neighborhood Map

Netherwood
Train Station



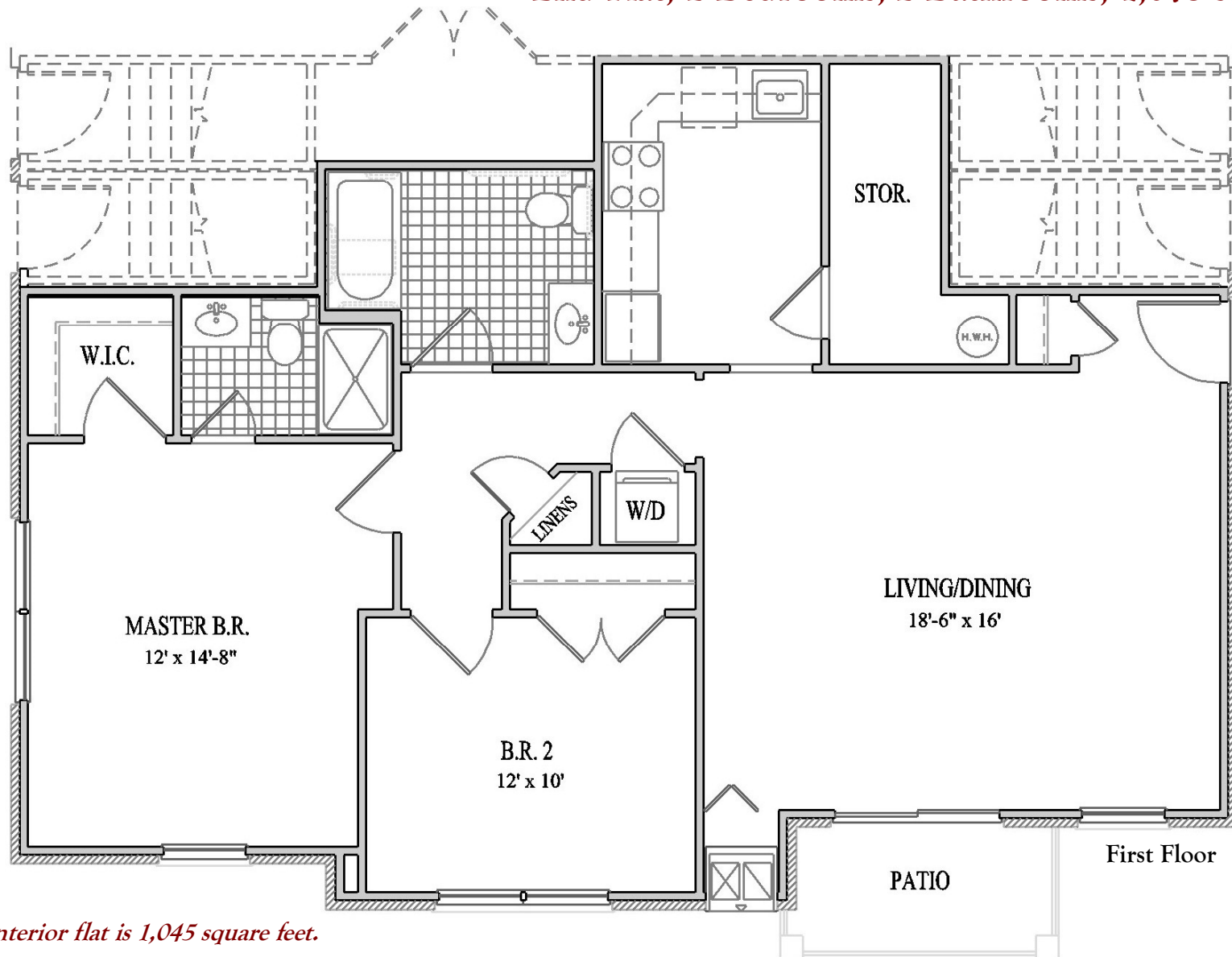
★ NETHERWOOD
★ POINTE ★



NETHERWOOD POINTE

The Corby

End Flat, 2 Bedrooms, 2 Bathrooms, 1,075 square feet

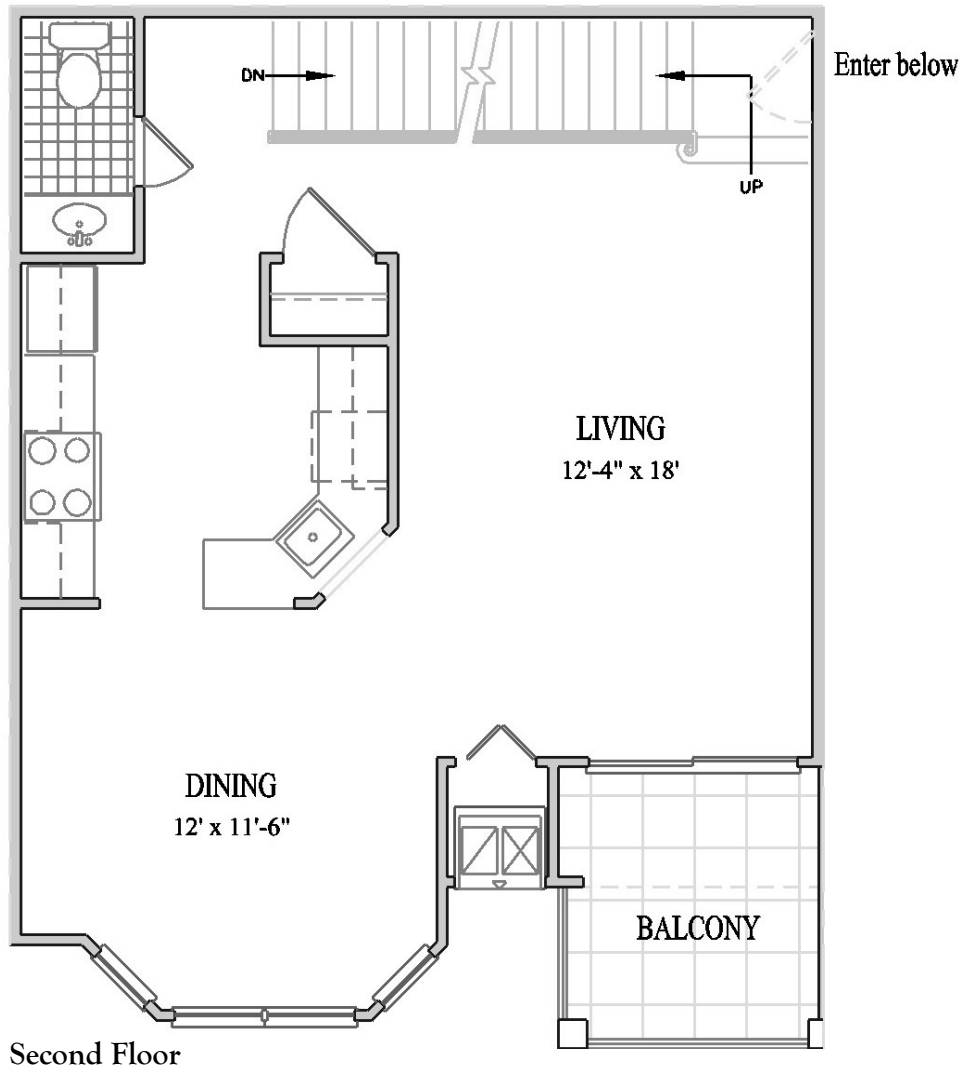


The Corby interior flat is 1,045 square feet.

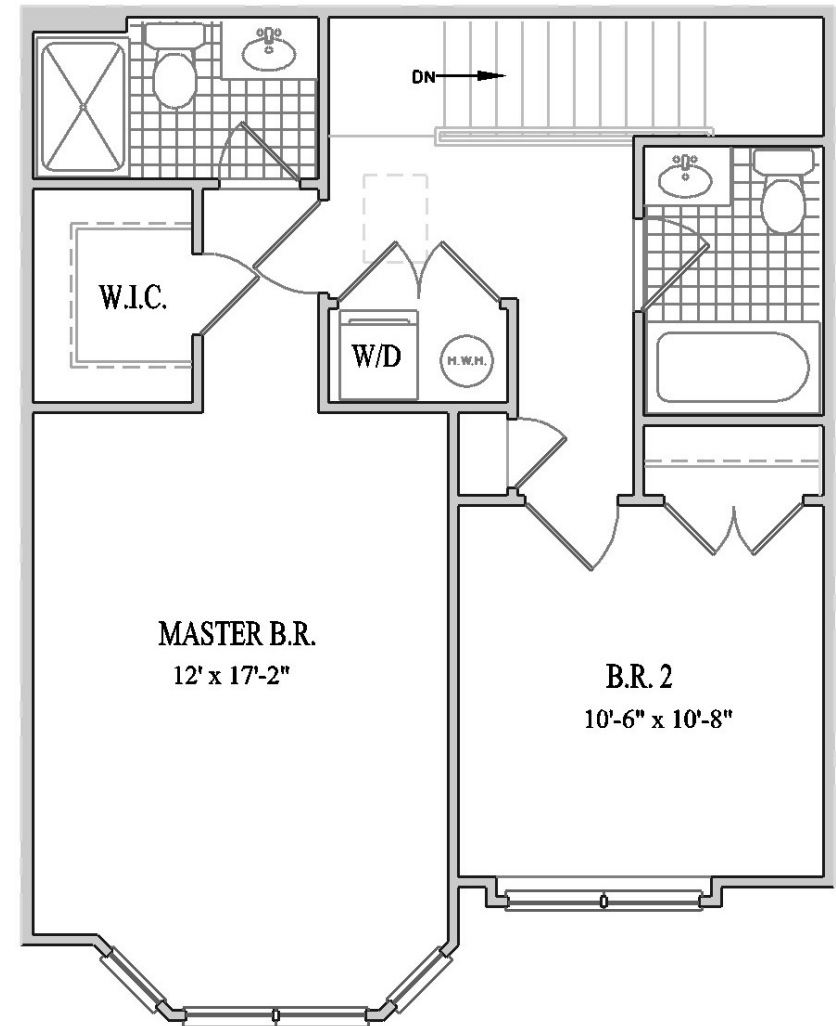
NETHERWOOD POINTE

The Denbury

Interior Townhome, 2 Bedrooms, 2.5 Bathrooms, 1,190 square feet



Second Floor



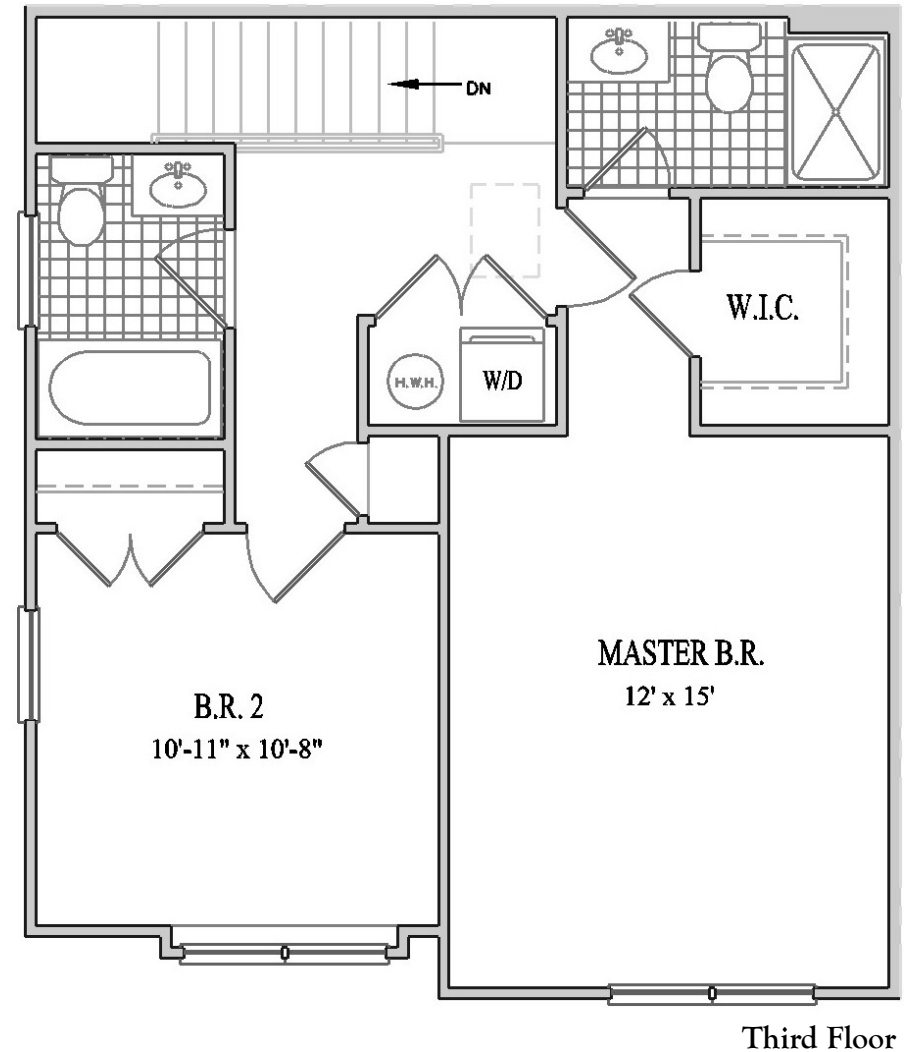
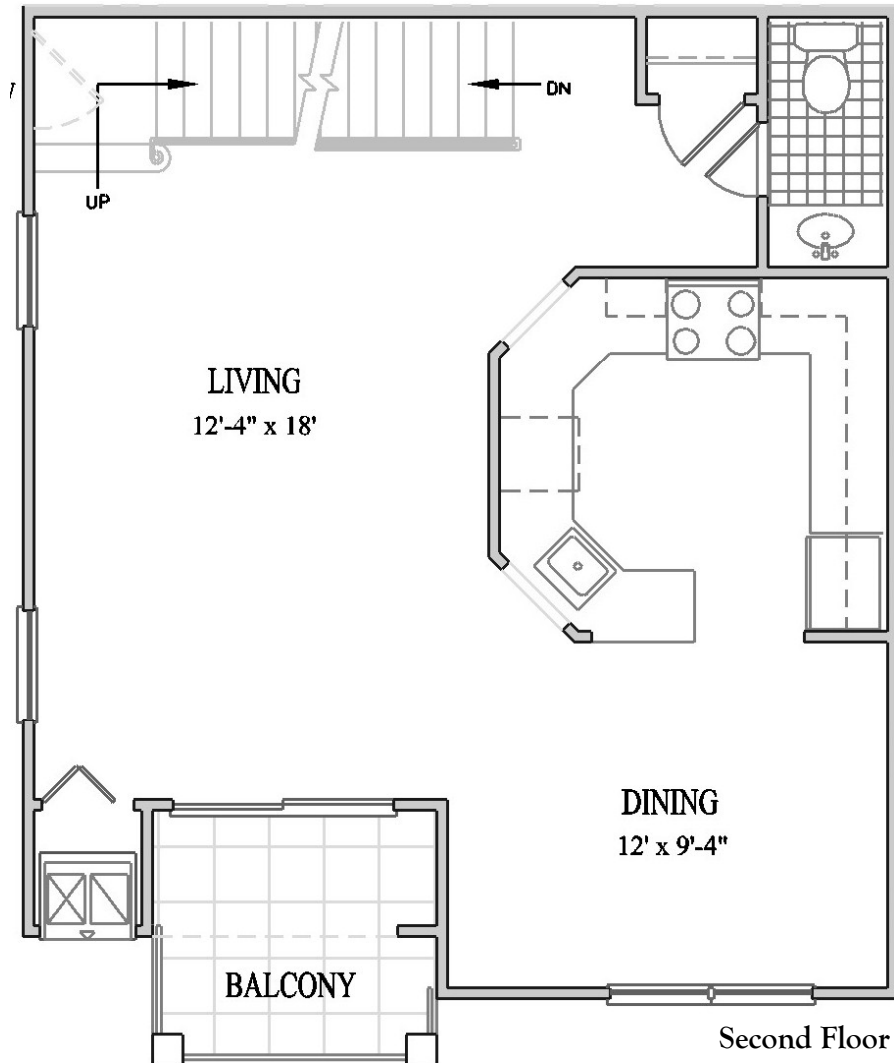
Third Floor

NETHERWOOD POINTE

The Denbury

End Townhome, 2 Bedrooms, 2.5 Bathrooms, 1,170 square feet

Enter below



NETHERWOOD POINTE

Community Layout

